



# Binarysystem®



LOGISTICS & MARITIME FORUM  
European trends and regional perspectives

15-16 February 2017, Piacenza Expo

Roberto Toscani Introducing

**SoftRail**  
Railway Software Solutions

*Think globally to act locally*

*How to enter european and oversea's railway  
markets with a unique software solution*





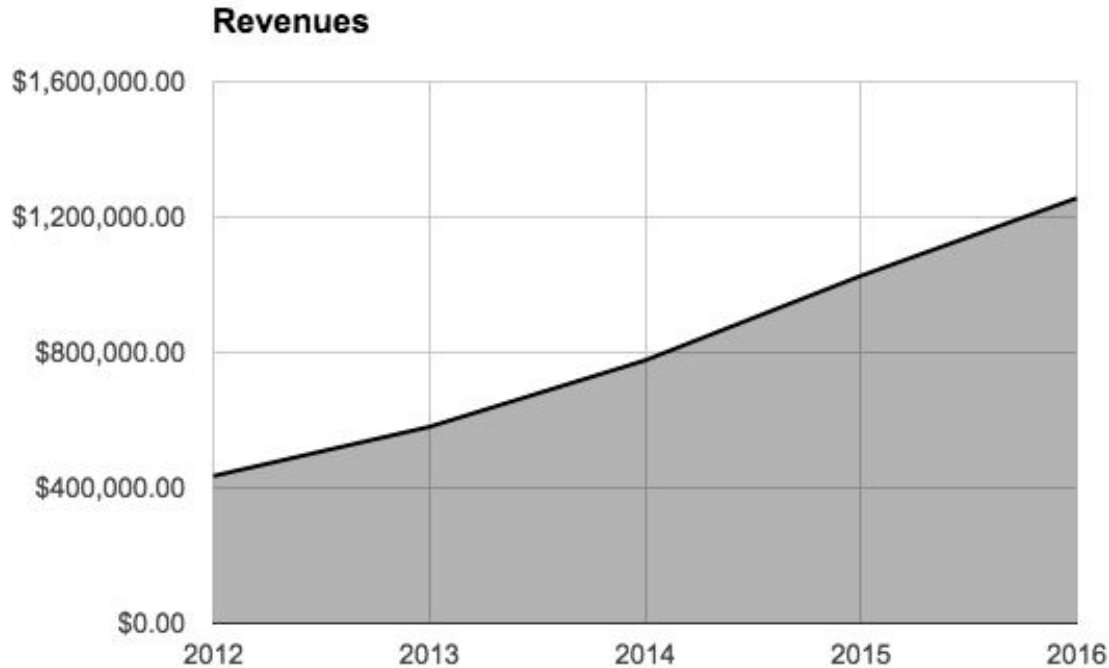
  
**SoftRail**

**APPLICATION  
TARGETED FOR THE  
RAILWAY  
INDUSTRY**

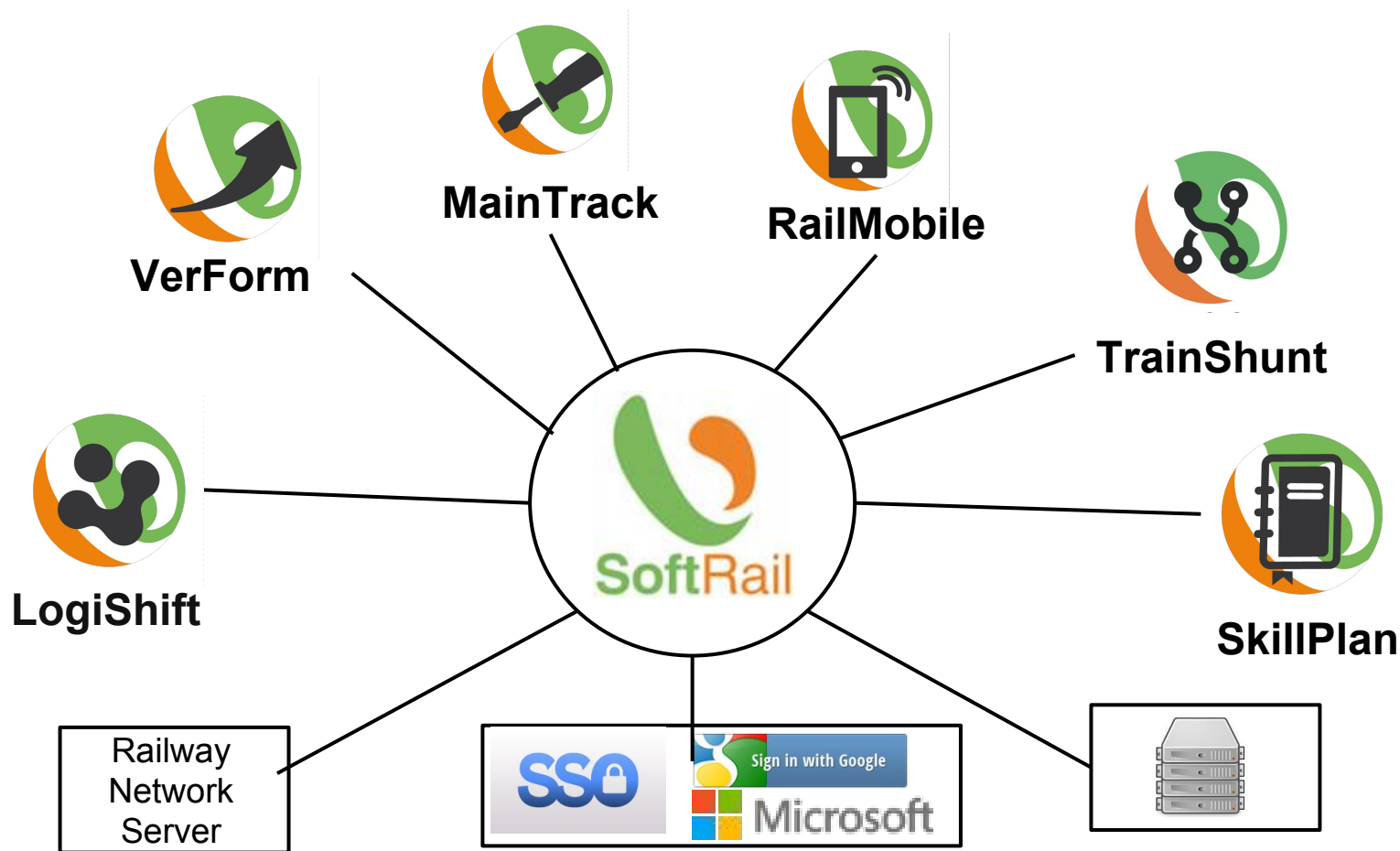
  
BinarySystem



## In 5 years..



- Founded in 2012
- First FFF Inves. 100K\$
- 100% of private market in Italy
- Already present in three country in **EU**
- Opening a Branch in **Germany**
- First experimentation in **USA (Florida)**







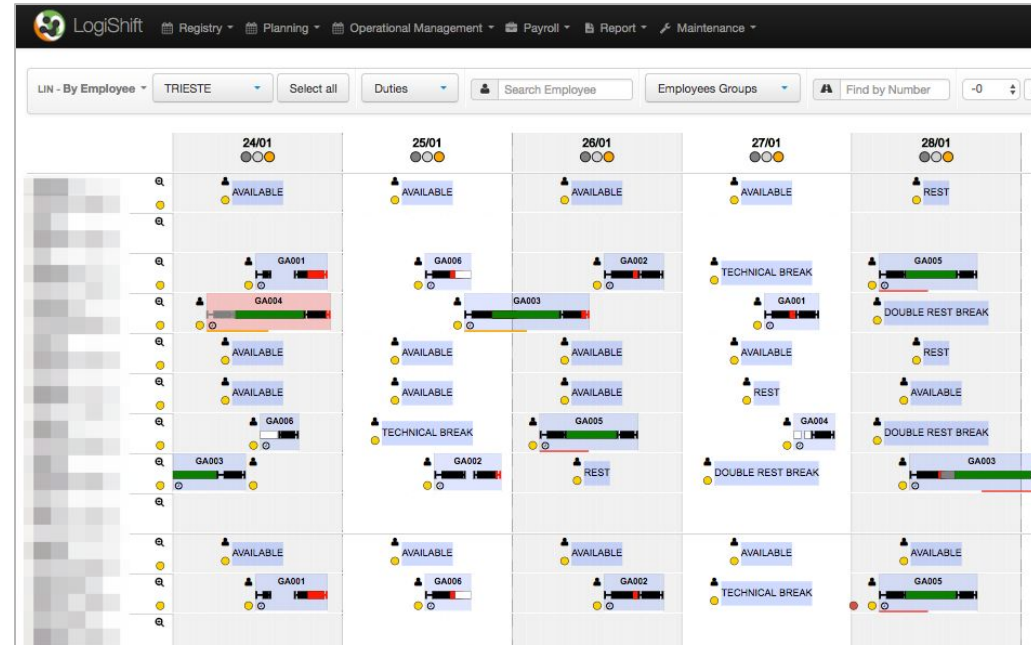
**LogiShift**

**The most advanced system for a coordinated planning of employees and company's vehicles fleets who provides all visual tools required for the periodical scheduling.**



# LogiShift - *Structure and Management Tools*

- Entire Rail Network mapping, tracks, routes, frequency;
- Custom setup, Master Data, contractual controls;
- Trains management, delays, changes, locomotives activities;
- Staff's shift planning, rotation, lines knowledge;
- Personnel notification, alerts;
- Final accounting, commercial trains;
- Reports, Excel exports, payroll interface;





**SkillPlan**

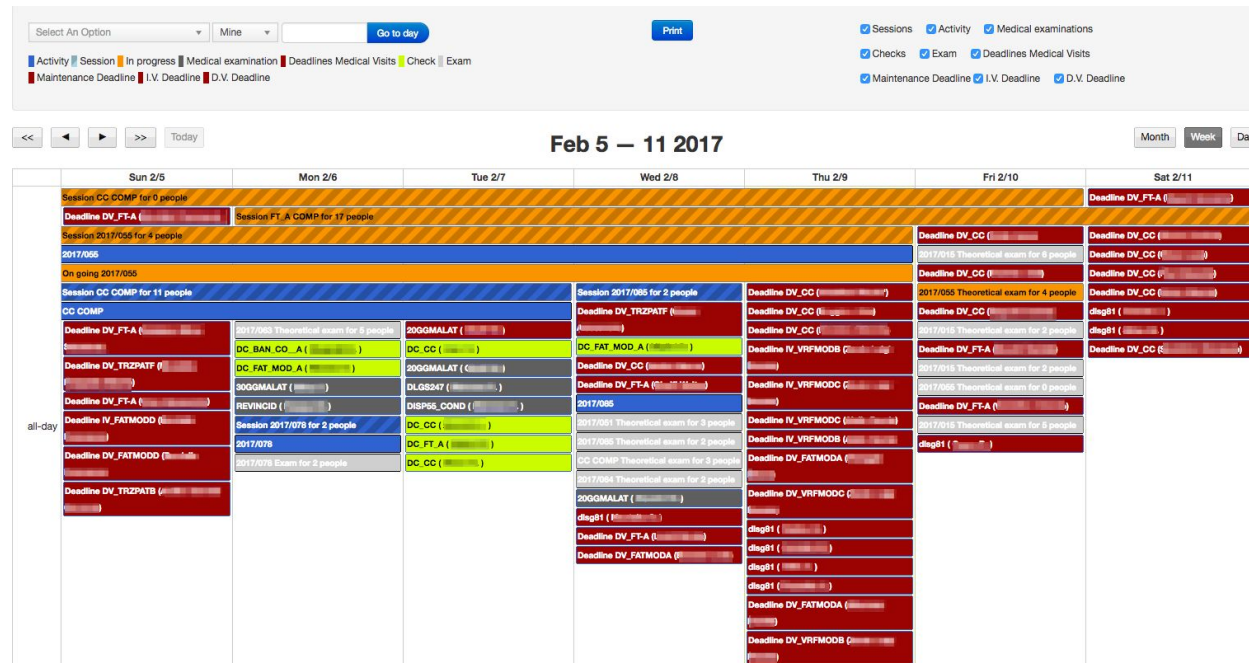
The software designed to furnish HR with a professional tool to plan, monitor and manage all the activities of training, refreshing and employees auditing.





## SkillPlan - *Structure and Management Tools*

- Instructor activities report and alerts;
- Training sessions management;
- Medical visits monitoring;
- Qualifications;
- Driver licenses;
- Activities calendar and timetable;
- Direct and indirect checks;
- PDF and Excel export.







**VerForm**

**Collects and processes data related to train inspections and activities verification, generating real-time digital documents for the use of the operational personnel.**



## VerForm - *Structure and Management Tools*

- H30 data import/export;
- Composition and verification recording activities;
- Activities calendar;
- Wagon registries;
- Photo uploading and Documents prints;
- Dangerous goods and wagon labels management;
- Alert and automatic warnings;
- Blacklist vehicles management
- Wagon, activities and trains reports.

The screenshot displays the VerForm web application interface. At the top, there is a navigation bar with a logo, 'VerForm' text, and links for 'Dashboard' and 'Registries'. The user is logged in as 'admin@binarysystem.eu'. A green notification banner at the top states 'Verification was successfully created.' Below this, a sidebar on the left lists four train entries. The main content area shows the details for the selected train, '33 68 4953 460-5'. It includes tabs for 'Details', 'Verification', 'Composition', and 'Checklist DF'. The 'Verification' tab is active, showing 'Visit Type' as 'VCO' and 'Visit Result' as 'Not in compliance'. There are 'Save' buttons for both the verification info and the labels. The 'Labels' section contains a grid of buttons for different wagon types, including 'I', 'K', 'L blu', 'L rossa', 'M', 'Na', 'R1', 'R3', 'U', and 'Ua'. An 'Anomalie' section at the bottom has a '+' button.

Train 43118 Of 2014-12-10

Verification Composition

E189.102  
Type Single Traction

1 33 68 4575 643-4  
Type Passengers

2 33 68 4953 460-5  
Type Passengers

3 37 80 4552 021-0  
Type Passengers

4 37 80 4961 300-3  
Type Freights

33 68 4953 460-5

Back To Cars List

Details Verification Composition Checklist DF

Verification info

Visit Type VCO

\* Visit Result Conform Not in compliance

Save

Labels

I K L blu

L rossa M Na

R1 R3 U

Ua

Save

Anomalie +



# RailMobile

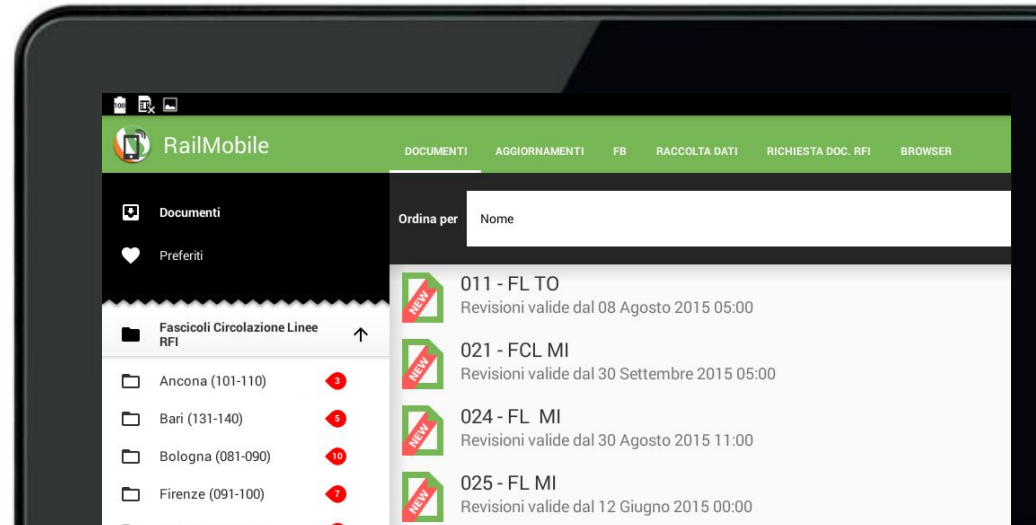
**The electronic folder for the train driver to collect, organize and distribute all the employees documentation who allows real-time communications between the rail company management and its operational personnel.**





## RailMobile - *Structure and Management Tools*

- Multiplatform compatibility: iOS, Android, Windows, OS X, Linux;
- Controlled Documents Distributions on tablet;
- Web and mobile technologies;
- Distribution state monitoring;
- XLS and PDF data export;
- Documents repository;
- Offline multiple document access;
- Users classifications;
- Questionnaires and forms submission and recording.







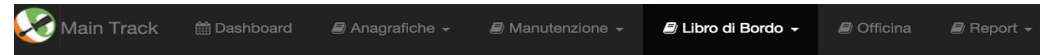
## MainTrack

MainTrack allows to plan and monitor the activities of preventive and corrective maintenance, managing all information in electronic format.



## MainTrack - *Structure and Management Tools*

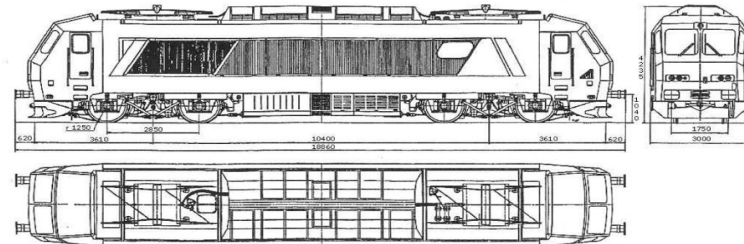
- Preventive and Corrective maintenance activities;
- Simulation to check the progression of vehicle use;
- Offline Vehicle Book management;
- Automatic email warning sending to Holders/ECM vehicles;
- Technical verification Planning;
- Vehicle refueling recording;
- Holder, Rents and ECM registry.



NEV: 12 34 5678 901-5

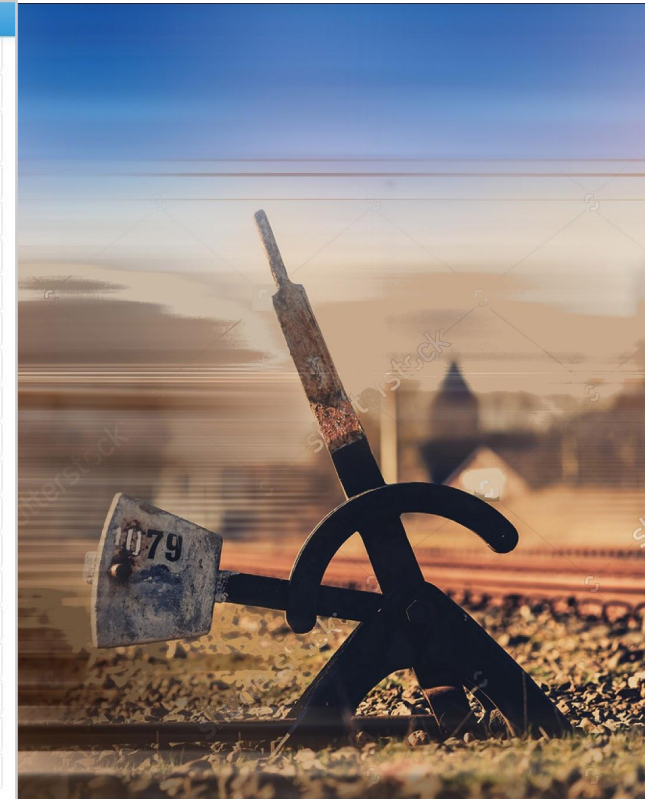
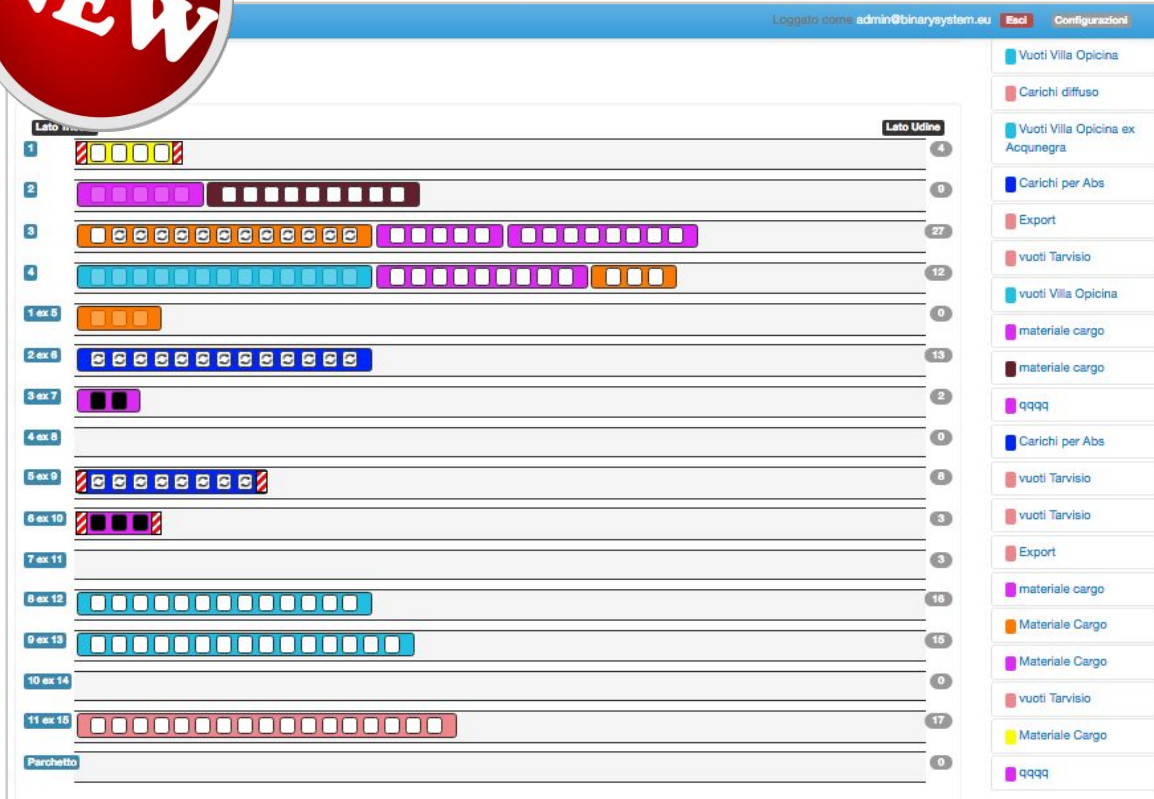
Impianto di Assegnazione:

Schema Veicolo





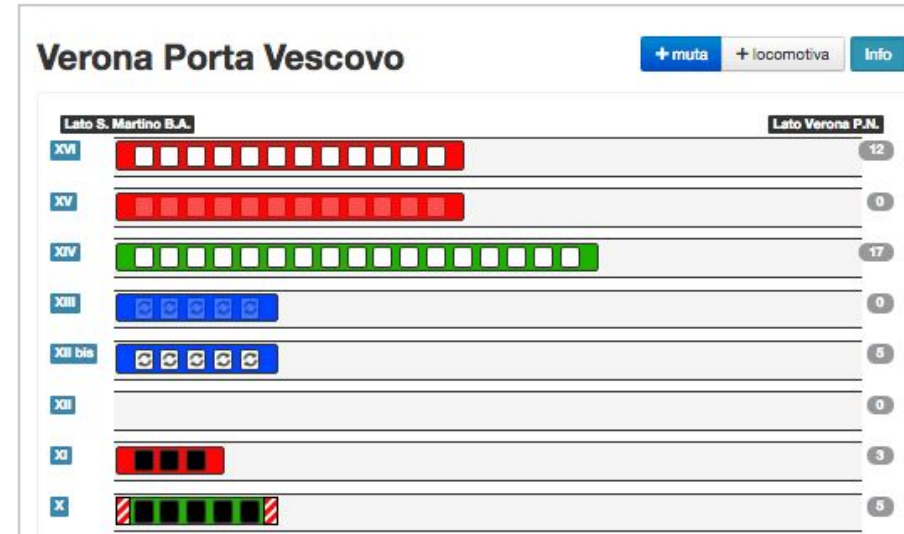
# TrainShunt Module





## NEWS: TrainShunt module

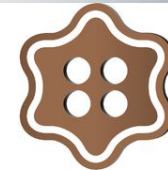
- Registry system and railway track configuration with graphical display;
- Mobile drag and drop handling operations
- Order entry of shunting to be processed and its operations to be billed (Primary, Secondary, Internal)
- Shunting transactions recording
- Excel or H30 wagon file import for composition
- Reports generation to final accounting and invoicing;
- Interface Management for active billing cycle;





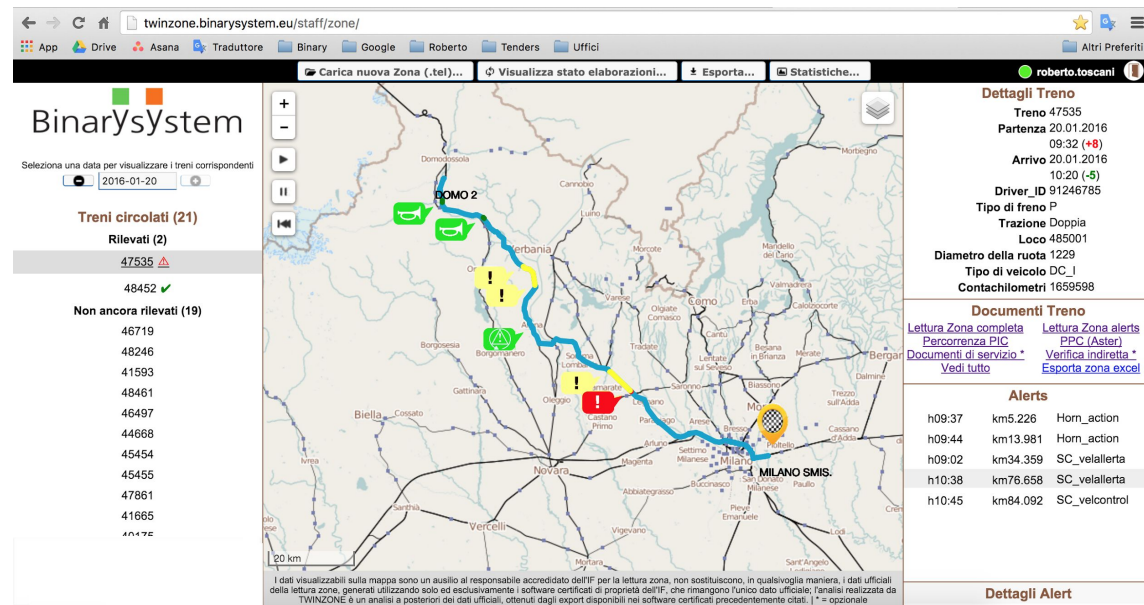


# TWINZONE - ASOLA



**ASOLA**

- Identification and conversion of all OTMR files;
- Processing of regular statistics about all trains;
- Visualisation of the train routes plotted on interactive map;
- Info consultation about the detected signals;
- Provision of a custom notification e-mail system;
- Viewing by the user of the detailed OTMR data on an interactive chart.





# UE 1158/2010 vs. SoftRail

Criteria	Characterization	LogiShift	SkillPlan	MainTrack	VerForm	RailMobile	In Progress
<b>Commission Regulation (UE) no 1158/2010 of 9 December 2010 - Annex II</b>							
B	RISK CONTROL RELATED TO THE SUPPLY OF MAINTENANCE AND MATERIAL			X	X		
G	SECURING CONTROL BY THE MANAGEMENT ON DIFFERENT LEVELS						X
I	ENSURING CONTINUOUS IMPROVEMENT						X
J	SAFETY POLICY APPROVED BY THE ORGANISATION'S CHIEF EXECUTIVE AND COMMUNICATED TO ALL STAFF					X	
K	QUALITATIVE AND QUANTATIVE TARGETS OF THE ORGANISATION FOR MAINTAINING AND ENHANCING SAFETY, AND PLANS AND PROCEDURES FOR REACHING THESE TARGETS						X
L	PROCEDURES TO MEET EXISTING, NEW AND ALTERED TECHNICAL AND OPERATIONAL STANDARDS OR OTHER PRESCRIPTIVE CONDITIONS	X		X	X		
N	PROVISION OF STAFF TRAINING PROGRAMMES AND SYSTEMS TO ENSURE THAT THE STAFF COMPETENCE IS MAINTAINED AND TASKS CARRIED OUT ACCORDINGLY		X				
O	ARRANGEMENTS FOR THE PROVISION OF SUFFICIENT INFORMATION WITHIN THE ORGANISATION AND, WHERE APPROPRIATE, BETWEEN ORGANISATIONS OPERATING ON THE SAME INFRASTRUCTURE					X	
P	PROCEDURES AND FORMATS FOR DOCUMENTING SAFETY INFORMATION, AND DESIGNATION OF A PROCEDURE FOR CONFIGURATION CONTROL OF VITAL SAFETY INFORMATION					X	
Q	PROCEDURES TO ENSURE THAT ACCIDENTS, INCIDENTS, NEAR MISSES AND OTHER DANGEROUS OCCURRENCES ARE REPORTED, INVESTIGATED AND ANALYSED AND THAT NECESSARY PREVENTIVE MEASURES ARE TAKEN						X
S	PROVISIONS FOR RECURRENT INTERNAL AUDITING OF THE SAFETY MANAGEMENT SYSTEM						X
<b>Commission Regulation (UE) no 1158/2010 of 9 December 2010 - Annex III</b>							
B	COMPLIANCE WITH NETWORK-SPECIFIC REQUIREMENTS FOR STAFF COMPETENCE	X	X				
C	COMPLIANCE WITH NETWORK-SPECIFIC REQUIREMENTS FOR MANAGEMENT OF ROLLING STOCK			X	X		



# 4th Railway Package

More and more towards a single European railway network (215.000 km)

- Bottlenecks delection;
- fill in missing cross-border links;
- promotion of integration and interoperability between different transportation ways.



- Functioning regulations and Standards;
- an efficient structure;
- opening national markets to passenger transport;
- specialized railway staff retention.



**< EMISSIONS**

**> INCREASE OF RAIL TRANSPORT**



## Our Customers







## BINARY SYSTEM - CIRCLE TOUCH COLLABORATION



### SoftRail Modules

- **Logshift;**
  - **VerForm;**
  - **RailMobile;**
- + **TrainShunt**

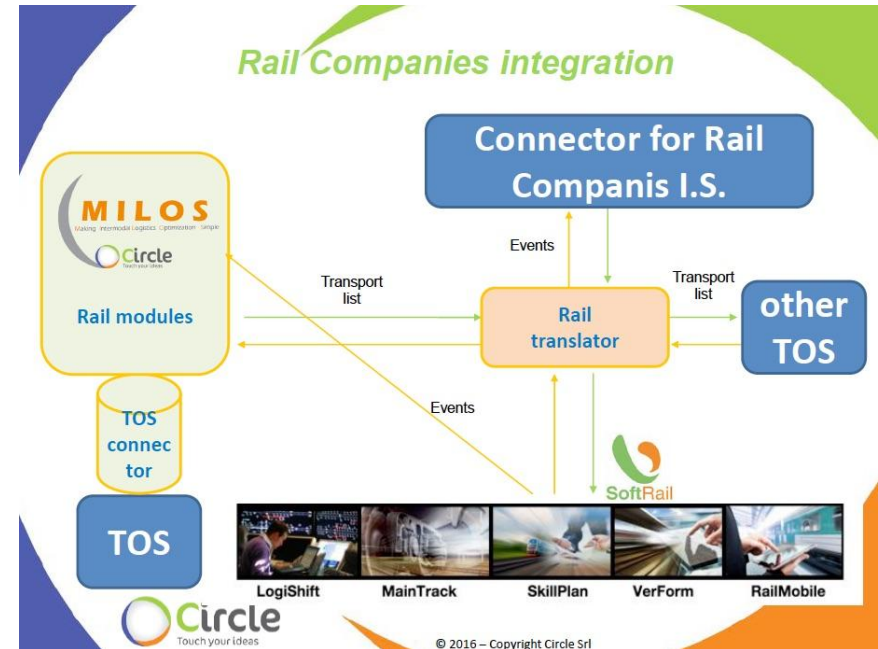
### MILOS Modules

- **CMP +**
- **RAIL +**
- **TOS**

Focus on: cim/waybill and  
Shunting + traction + terminal

→ designed to improve operations  
inside terminal rail yards, allowing to:

- graphically display in real-time the rail yard state and the position of wagons
- manage rail planning, containers loading and discharging activities with “Drag&Drop” functionality.





## Case Study: Lugo Terminal

*Lugo Terminal S.p.A. is a logistics platform that boasts an important infrastructure equipped to offer a wide range of services for the movement of goods of any type.*

*The intermodal vocation of Lugo Terminal S.p.A. is favored by its privileged geographical position that allows access to both the main **motorway and railway lines**, placing it in a central location between Northern Europe and Southern Italy and fostering the exchange of goods via rail.*

### Binary System's ShunTrain and Circle's MILOS Rail Management

allow Lugo Terminal managing the rail planning activities related to its commercial routes in both intermodal hubs in which it operates.







# Binary System and Piacenza Intermodal Hub

## *A raw material matter...*

- Excellence in intermodality (land, iron, water, air transportation);
- Motorway intersection;
- Great Railway development;
- Location of large multinational head office;
- Export increase of +50%;
- Green expansion





## Binary System S.r.l.

Via Coppalati,6 - 29122 Piacenza (PC)

phone: +39 0523 695132

web: <http://www.binarysystem.eu>

mail: [info@binarysystem.eu](mailto:info@binarysystem.eu)

## Thank you



**LogiShift**

**MainTrack**

**SkillPlan**

**VerForm**

**RailMobile**

**TrainShunt**