



LOGISTICS & MARITIME FORUM
European trends and regional perspectives

15-16 February 2017, Piacenza Expo

Inland Waterway Transport on the Danube

Why to use a river for cargo transport?





Inland Waterway Transport on the Danube

by

Dr. Michael Fastenbauer

Head of Development & Innovation

via donau -

Austrian Waterway Management Company

Vienna, Austria



The Danube

- 351 km in Austria
- 2.415 km navigable in 10 countries
- 2.857 km total length

managed in Austria by state-owned viadonau



Central Europe's Danube River











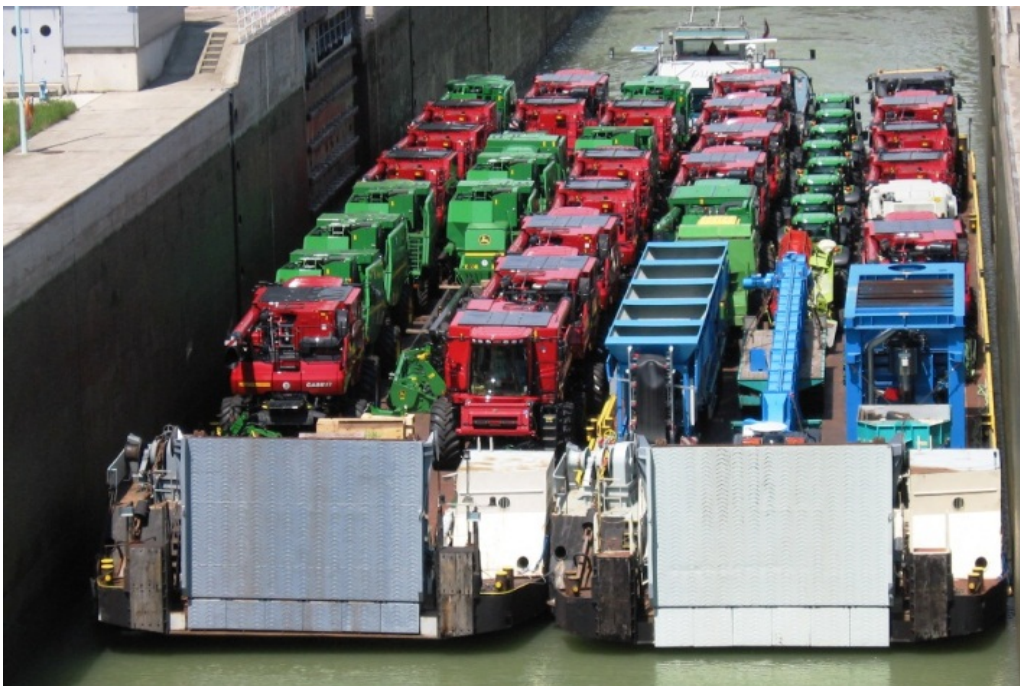


viadonau



Photo credits:
Danube Partners
High & Heavy GmbH,
via donau,
Willi Betz

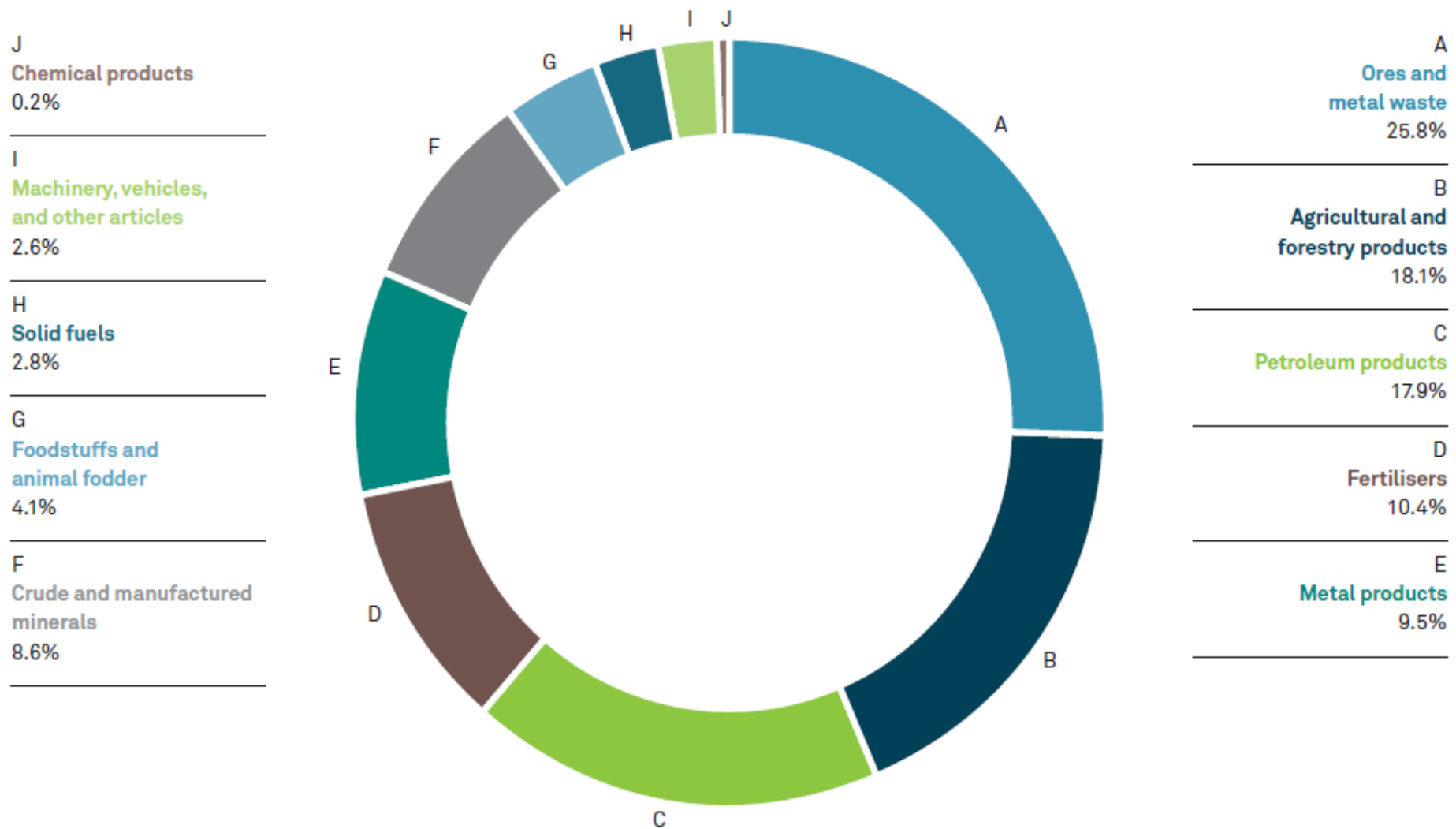
Page 11







Transport volume on the Austrian Danube by commodity group 2014





Why to use a river for cargo transport?

1 convoy with four pushed lighters: 7,000 net tons



175 railway wagons at 40 net tons each



280 trucks at 25 net tons each



Inland vessels beat road and rail in terms of transport capacity

Source: via donau



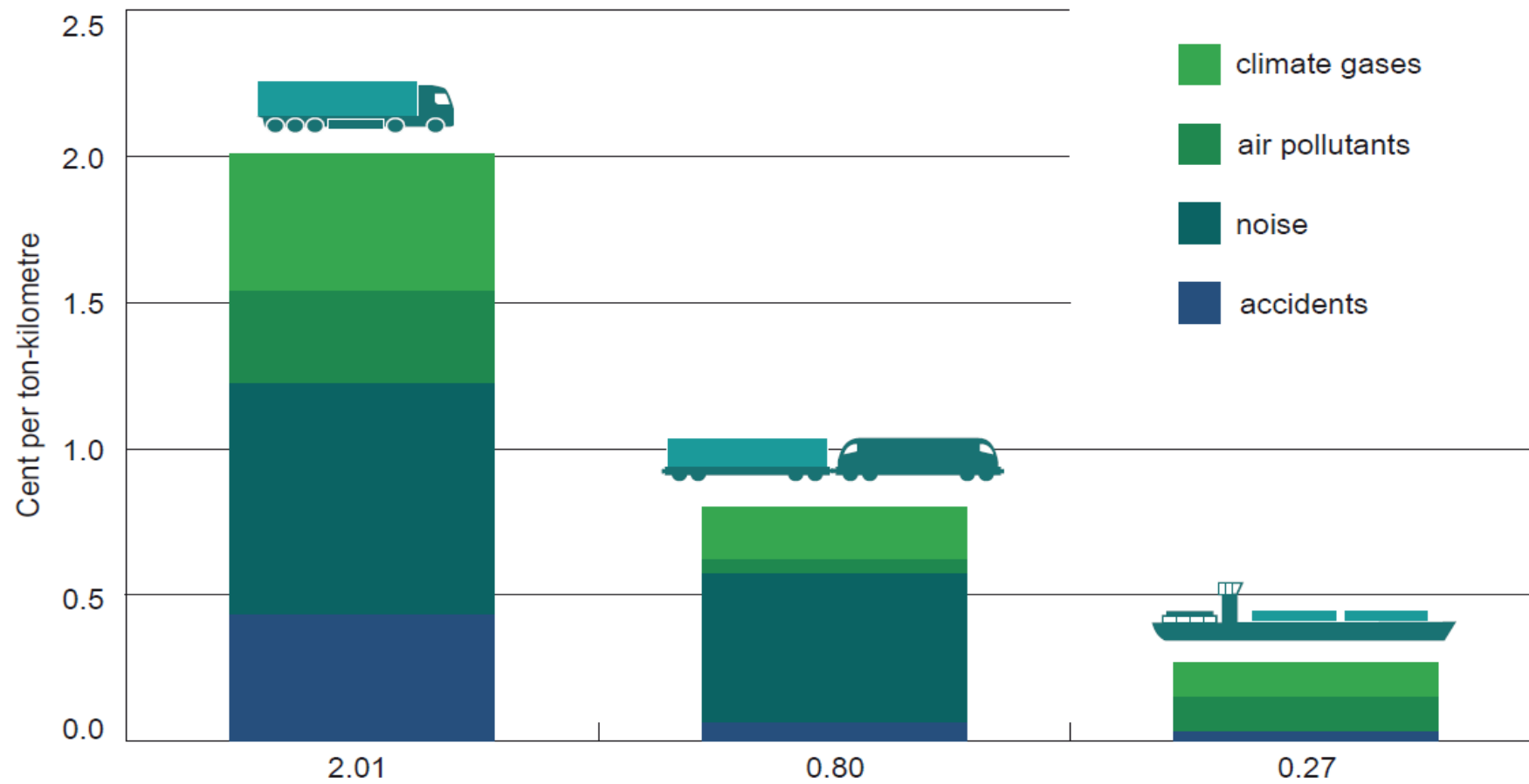
300 km



370 km

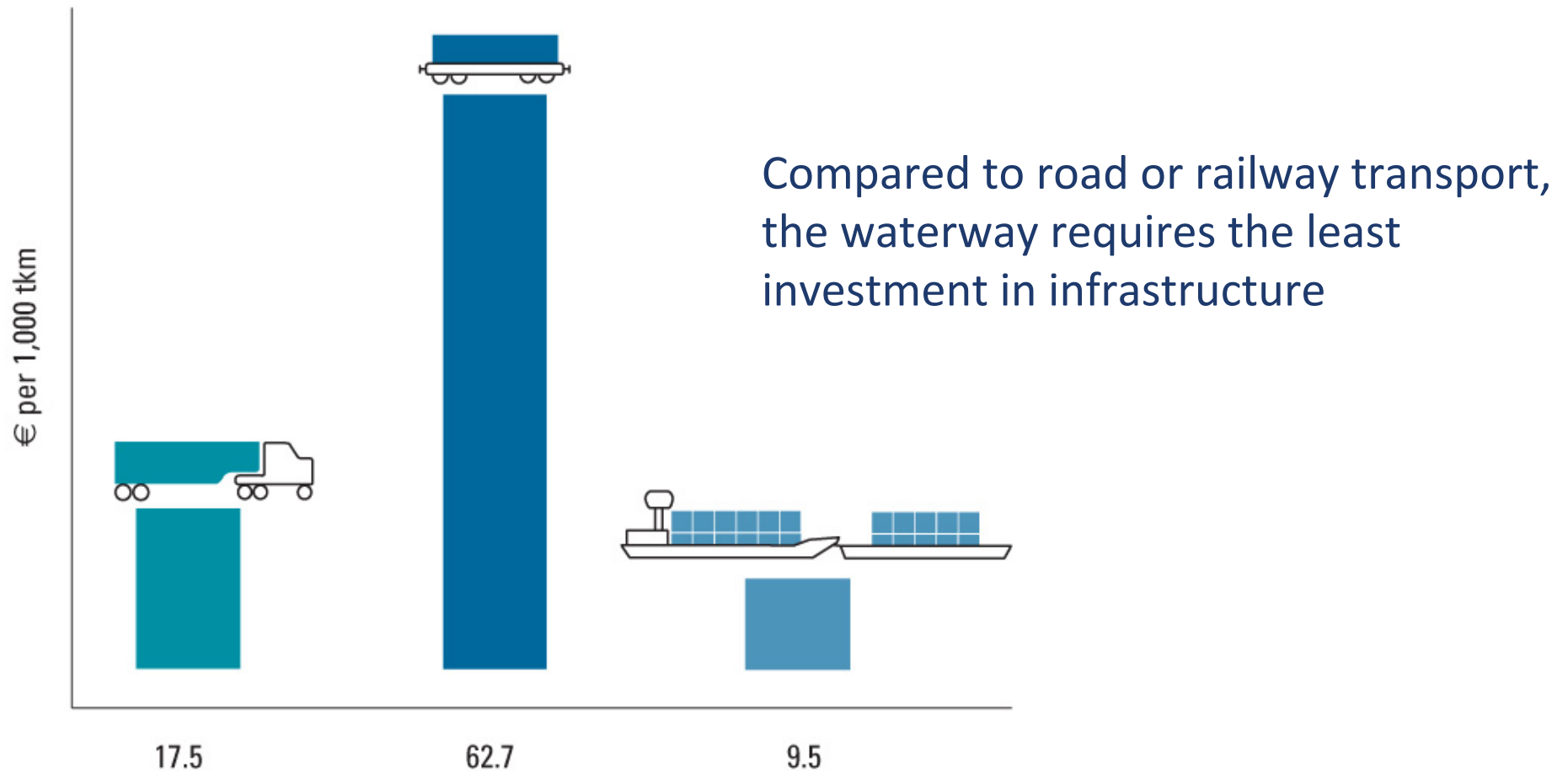
Source: via donau

Transport distances for one ton of cargo requiring the same amount of energy



The sum of external costs for inland vessels is by far the lowest (average values for selected transports of bulk goods)

Infrastructure investment costs in Austria



Source: arealConsult and via donau



Why to use a river for cargo transport?

- ...
- powerful and efficient mode of transport
- future-safe due to its environmental performance
- influence on business in the region (logistics, industry, trade, agriculture etc.)
- ...



Other characteristics of IWT

- a niche business (for construction industry, for equipment industry, for employment)
- scarce availability of information
- general attention only in rare cases
- continuously interlinked with habitats



Challenges for IWT stakeholders

- for infrastructure managers
 - for education institutes
 - for logistics service providers
 - for logistics service users
- => information dissemination and special care



Measures taken so far in Austria

(in line with European strategy, e.g. NAIADES)

- National Action Programme Danube
(integrating environment - business - safety)
- impact control, cross-border activities
- Promotion / dissemination by WW manager



Examples for promotion activities

- Dedicated team for knowledge acquisition and dissemination
- Danube Business Talks
- Manual of Danube Navigation
- Danube Logistics Portal
- Workshops related to specific cargo groups

Workshop series for Danube logistics

- Joint **Working Initiatives with representatives of the sector** (cargo owners, logistics service providers, experts)
- Objective: **Modal shift of promising types of cargo** towards environmentally-friendly inland navigation based on preliminary analysis
- **Regular workshops on national level** and **internationalisation** (e.g. transport logistic Munich, Danube Business Talks)
- Elaboration of a **catalogue of measures** suitable for the promotion of Danube navigation in certain sectors
- **Topics so far:**
High&Heavy, Renewable resources, Recycling products, Construction material

viadonau



Photo credits: viadonau, Hafen Straubing-Sand

High & Heavy Initiative (2010 – 2012)

Advantages of Danube logistics for high & heavy transports

- **High loading capacities** compared to road and rail transport (size and weight less critical)
- **Less transport restrictions** compared to road (e.g. weekend bans)
- **No transit permissions** needed for oversized cargo
- **Less problems in passing bridges, tunnels and other obstacles;** no need to remove traffic lights or signs

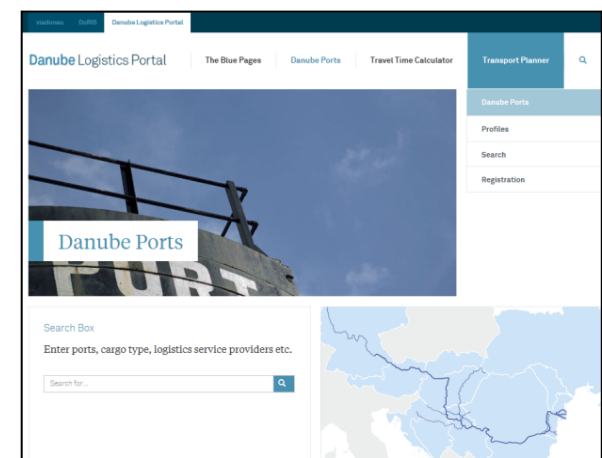
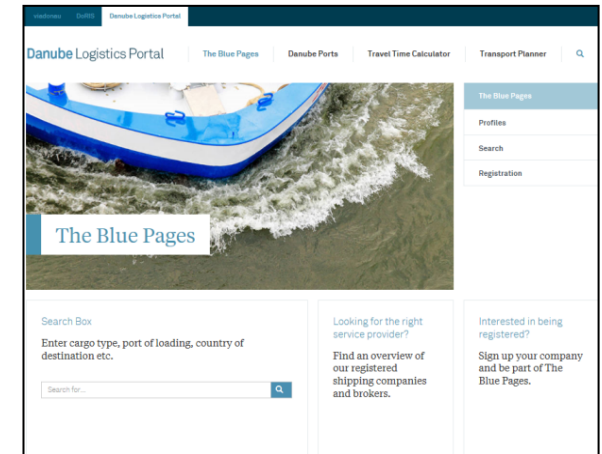


Photo credits: viadonau

Danube Logistics Portal

- The Blue Pages
Online directory of shipping companies and ship brokers
- Danube Ports
Interactive map with port profiles
- Travel time calculator
- Transport planner

www.danube-logistics.info





LOGISTICS & MARITIME FORUM
European trends and regional perspectives

15-16 February 2017, Piacenza Expo

IWT in logistics education

REWWay (Research & Education in Inland Waterway Logistics)

is a knowledge cooperation between

Logistikum Steyr with logistics research & education expertise
and

viadonau with inland waterway expertise

with the purpose of

integrating inland waterway transport into logistics education.

Example products:

- learning material (powerpoint, videos, exercises, de/en)
- IWT part of curricula



Summary

- Inland Waterways are a strategic asset for the region (logistics, industry, trade etc.)
- with a high potential for the future of growing care for the environment
- which need active information collection and dissemination by all stakeholders.



Call for action to all stakeholders

Logistics service providers!

Logistics service users!

Infrastructure managers!

Education institutes!

**Have a closer look
to inland waterways transport
and take action with patience!**



LOGISTICS & MARITIME FORUM
European trends and regional perspectives

15-16 February 2017, Piacenza Expo

Some more Danube pictures



Dürnstein, Wachau (AT)

































The lock „Freudenau“ in Vienna



Call for action to all stakeholders

Logistics service providers!

Logistics service users!

Infrastructure managers!

Education institutes!

**Have a closer look
to inland waterways transport
and take action with patience!**